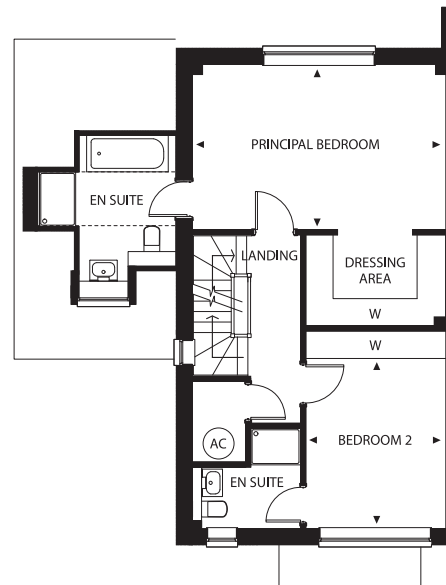
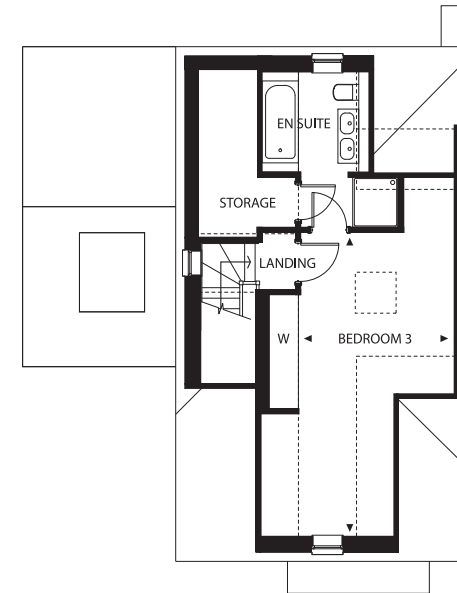


Ground Floor



First Floor



Second Floor

## No.4

Three-bedroom townhouse with private garden, driveway parking and garage.

Kitchen / Dining Area	5.6m x 3.6m
Living Room	5.3m x 3.3m
Principal Bedroom	5.6m x 3.7m
Bedroom 2	3.8m x 3.1m
Bedroom 3	6.7m x 3.7m

