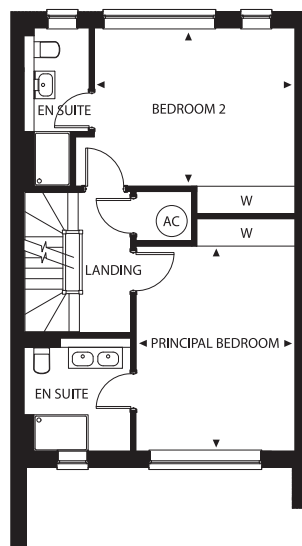
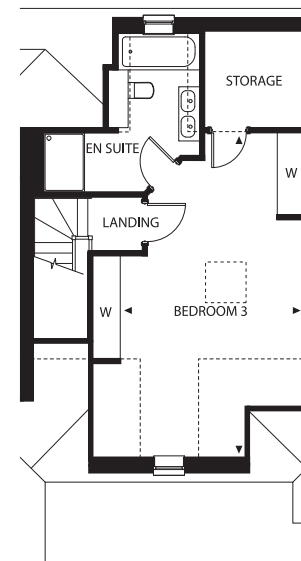


Ground Floor



First Floor



Second Floor

## No.3

Three-bedroom townhouse with private garden and parking for two cars.

|                   |             |
|-------------------|-------------|
| Kitchen           | 3.5m x 2.5m |
| Dining Area       | 3.5m x 3.4m |
| Living Room       | 5.5m x 3.4m |
| Principal Bedroom | 4.6m x 3.5m |
| Bedroom 2         | 4.4m x 3.5m |
| Bedroom 3         | 7.0m x 4.0m |

