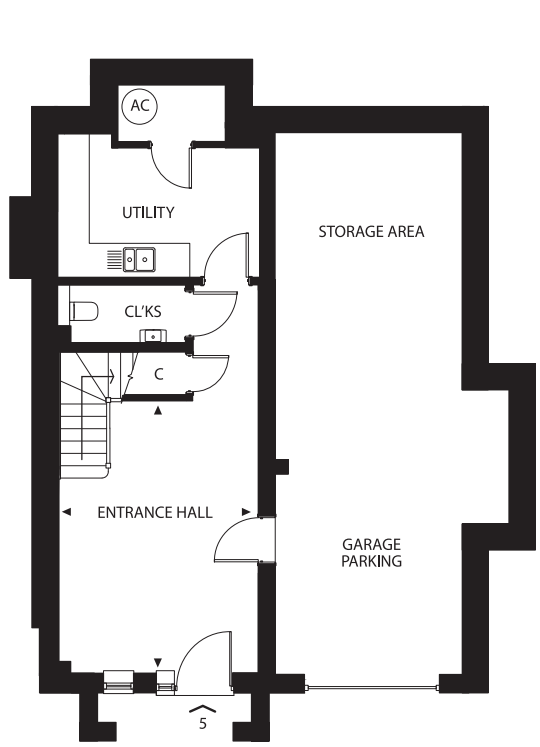
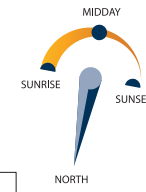


No. 5

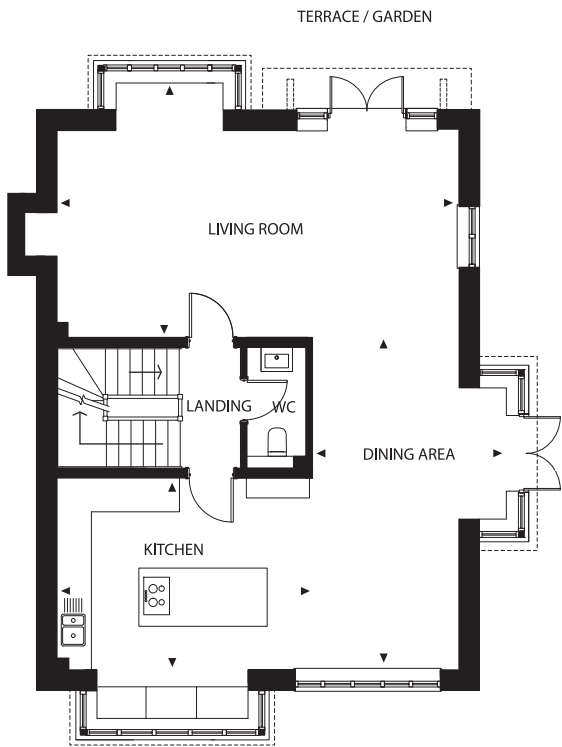


CGI image - indicative only

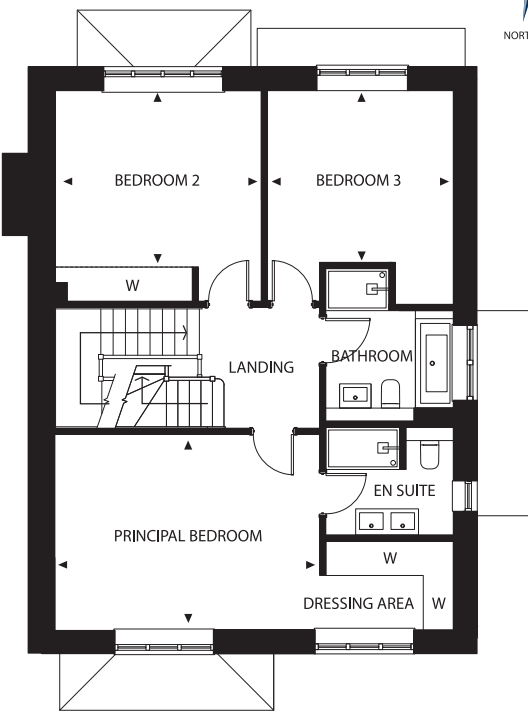




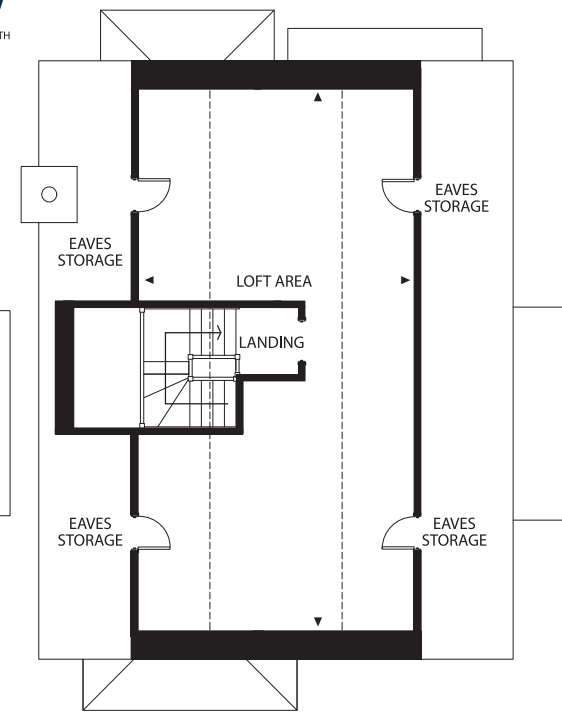
Lower Ground Floor



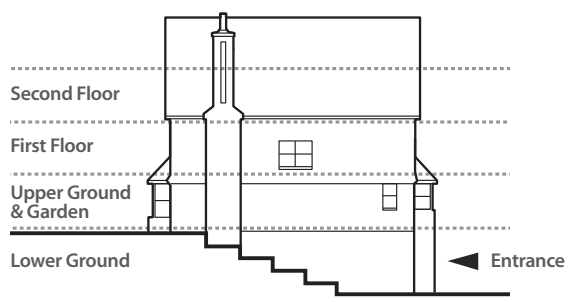
Upper Ground Floor



First Floor



Second Floor



# No.5

Three/four-bedroom townhouse with private garden, integral garage and driveway parking.

Entrance Hall	5.3m x 3.8m
Kitchen	4.7m x 3.6m
Dining Area	6.1m x 3.5m
Living Room	7.7m x 4.7m
Principal Bedroom	5.1m x 3.7m
Bedroom 2	3.9m x 3.3m
Bedroom 3	3.6m x 3.3m
Loft Area	10.3m x 5.3m



Plans are not to scale. Dimensions are approximate and follow the arrows within the plans.