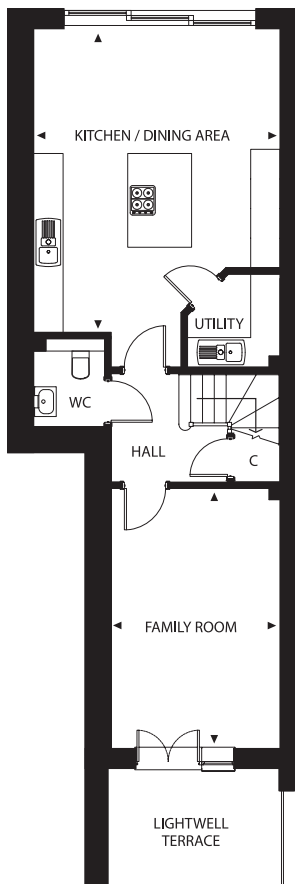
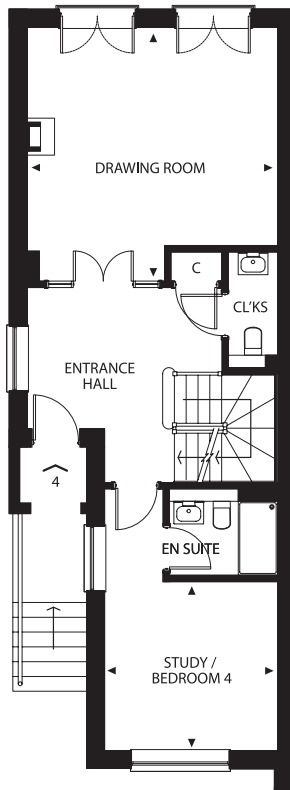


TERRACE / GARDEN

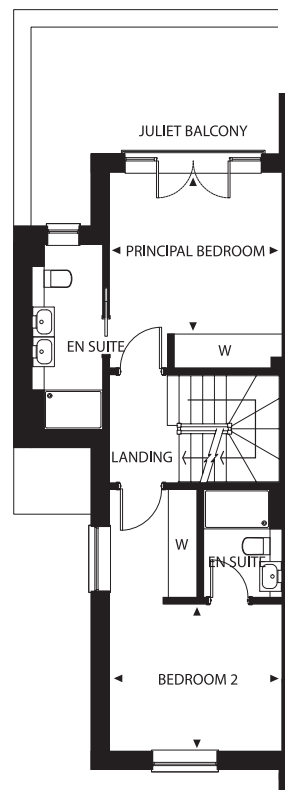


Lower Ground

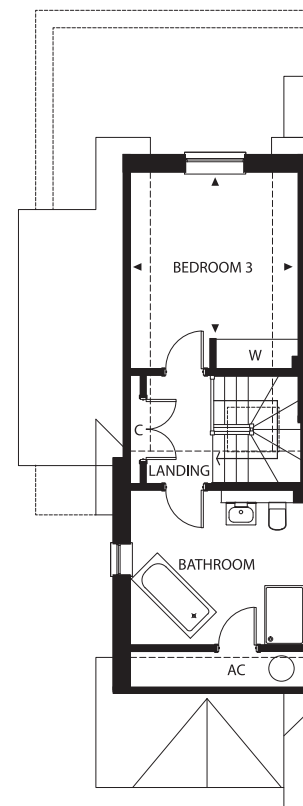
JULIET BALCONIES



Ground Floor



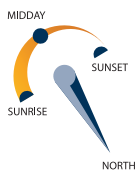
First Floor



Second Floor

No.4

Three/four-bedroom town-house with private garden and allocated off-street parking for two cars.



Kitchen / Dining Area	6.8m x 5.0m
Family Room	5.2m x 3.4m
Drawing Room	5.1m x 5.1m
Principal Bedroom	3.5m x 3.2m
Bedroom 2	3.5m x 3.0m
Bedroom 3	3.3m x 3.3m
Study / Bedroom 4	3.5m x 3.4m

