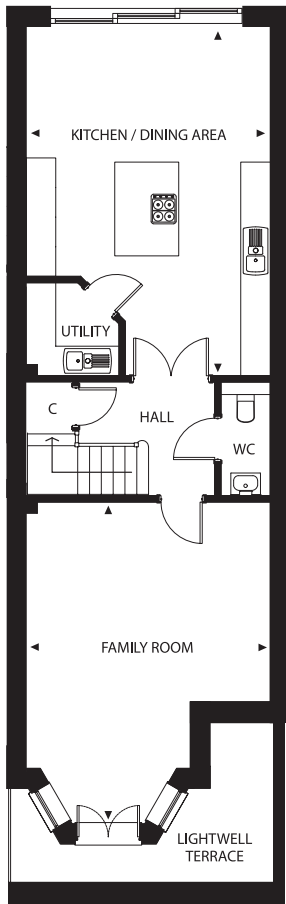
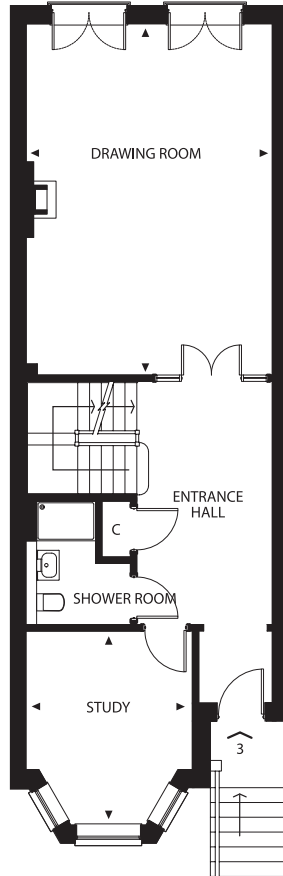


TERRACE / GARDEN

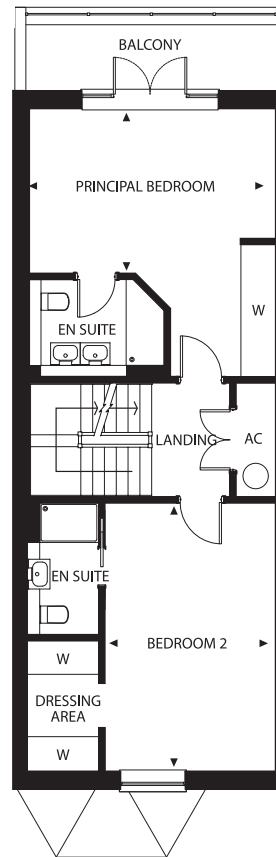


Lower Ground

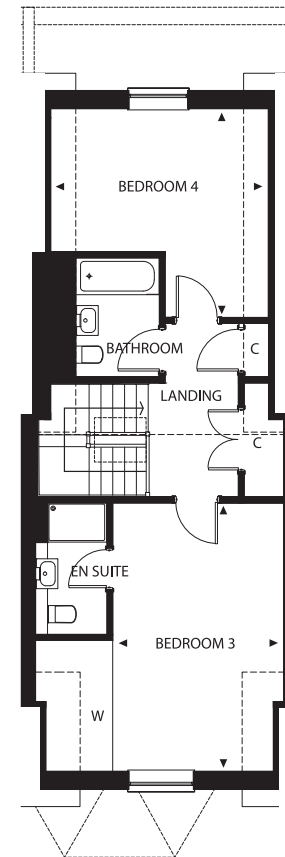
JULIET BALCONIES



Ground Floor



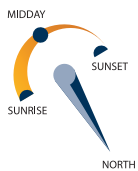
First Floor



Second Floor

No.3

Four-bedroom town-house with private garden, balcony and allocated off-street parking for two cars.



Kitchen / Dining Area

7.0m x 4.9m

Family Room

6.5m x 4.9m

Drawing Room

7.1m x 5.0m

Study

3.9m x 3.4m

Principal Bedroom

5.0m x 3.5m

Bedroom 2

5.4m x 3.4m

Bedroom 3

5.4m x 3.4m

Bedroom 4

4.4m x 4.2m

