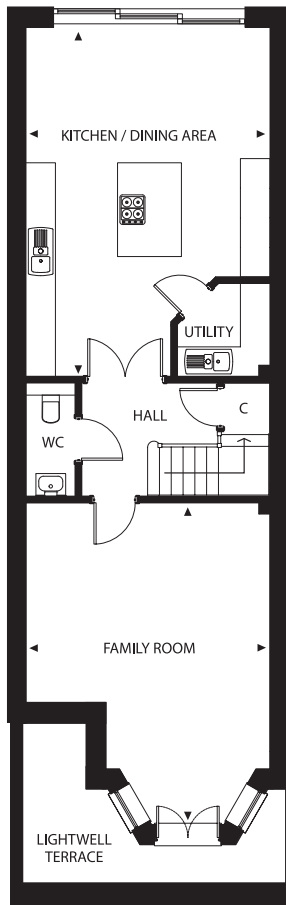
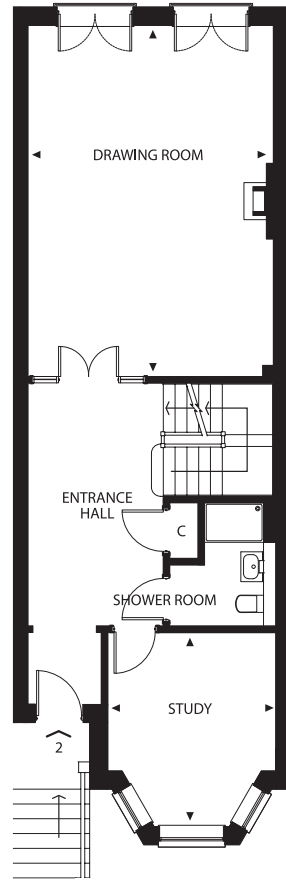


TERRACE / GARDEN

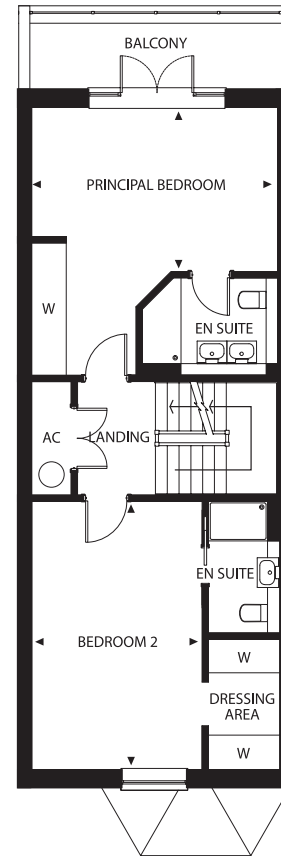


Lower Ground

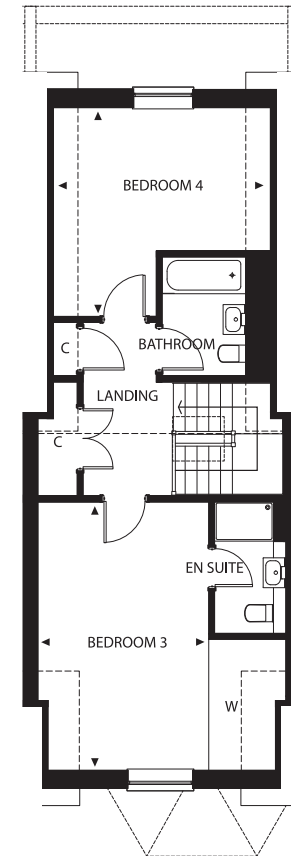
JULIET BALCONIES



Ground Floor



First Floor



Second Floor

No.2

Four-bedroom town-house with private garden, balcony and allocated off-street parking for two cars.



Kitchen / Dining Area	7.0m x 4.9m
Family Room	6.5m x 4.9m
Drawing Room	7.1m x 5.0m
Study	3.9m x 3.4m
Principal Bedroom	5.0m x 3.5m
Bedroom 2	5.4m x 3.4m
Bedroom 3	5.4m x 3.4m
Bedroom 4	4.4m x 4.2m

