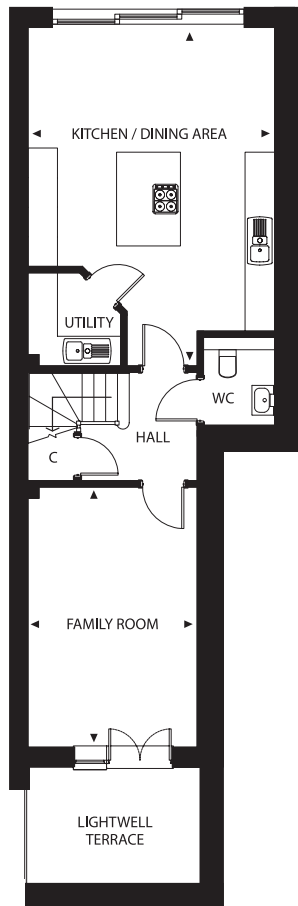
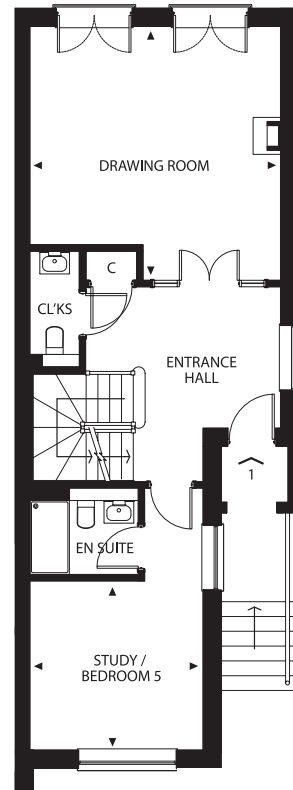


TERRACE / GARDEN

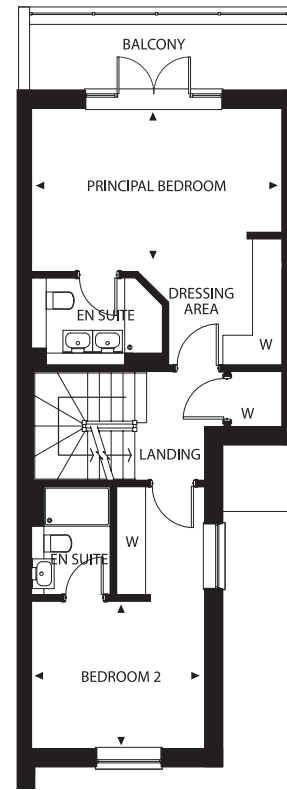


Lower Ground

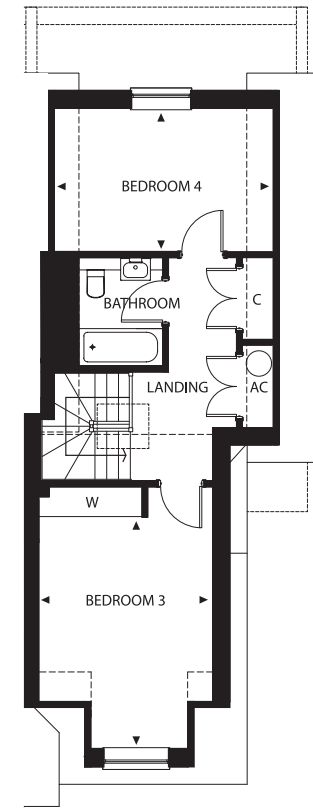
JULIET BALCONIES



Ground Floor



First Floor



Second Floor

No.1

Four/five-bedroom town-house with private garden, balcony and allocated off-street parking for two cars.



Kitchen / Dining Area	6.8m x 5.0m
Family Room	5.2m x 3.4m
Drawing Room	5.1m x 5.1m
Principal Bedroom	5.0m x 3.1m
Bedroom 2	3.5m x 3.0m
Bedroom 3	4.7m x 3.5m
Bedroom 4	4.4m x 2.9m
Study / Bedroom 5	3.5m x 3.4m

