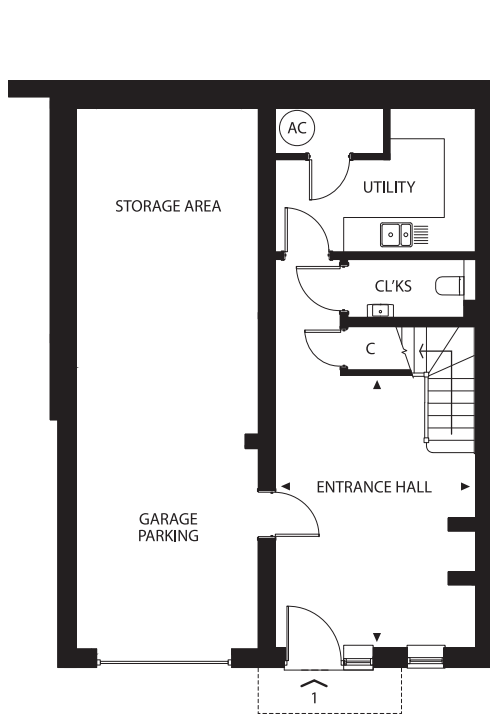
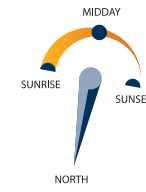
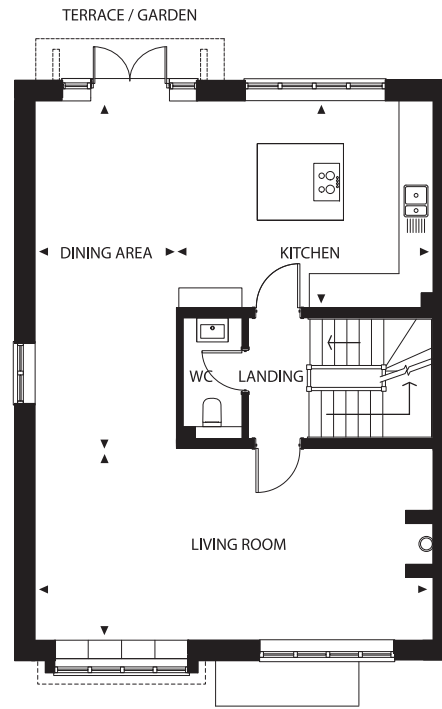


No. 1

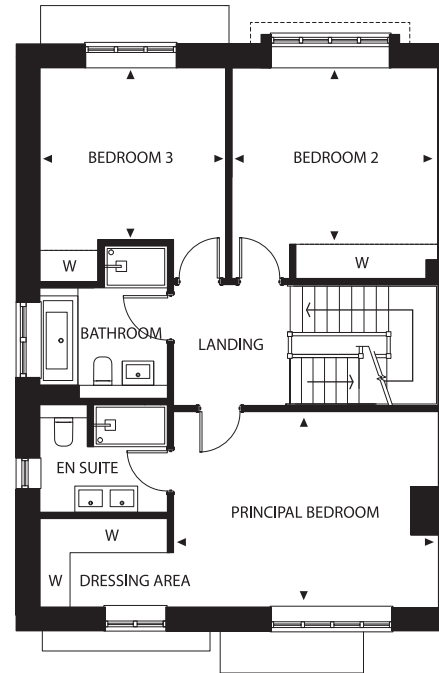




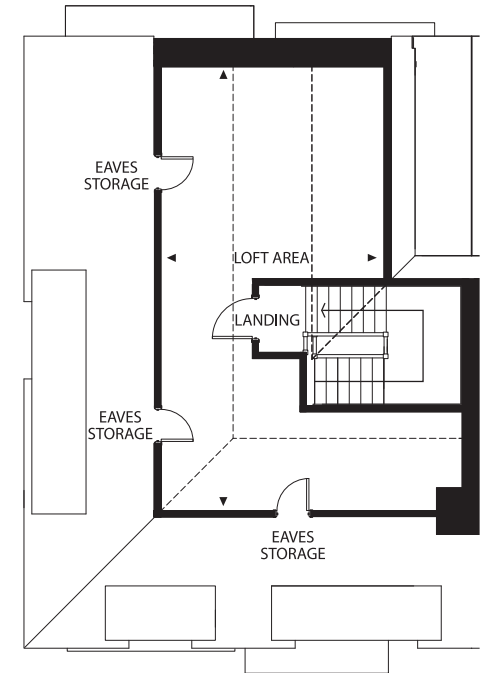
Lower Ground Floor



Upper Ground Floor



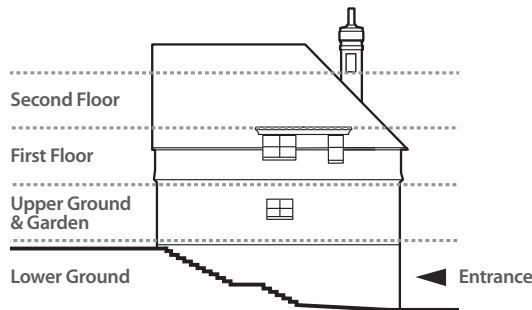
First Floor



Second Floor

# No.1

Three/four-bedroom townhouse with private garden, integral garage and driveway parking.



|                   |             |
|-------------------|-------------|
| Entrance Hall     | 5.1m x 3.8m |
| Kitchen           | 4.9m x 3.9m |
| Dining Area       | 6.4m x 2.7m |
| Living Room       | 7.6m x 3.6m |
| Principal Bedroom | 5.0m x 3.8m |
| Bedroom 2         | 4.0m x 2.9m |
| Bedroom 3         | 3.5m x 3.3m |
| Loft Area         | 8.4m x 4.2m |

Plans are not to scale. Dimensions are approximate and follow the arrows within the plans.

