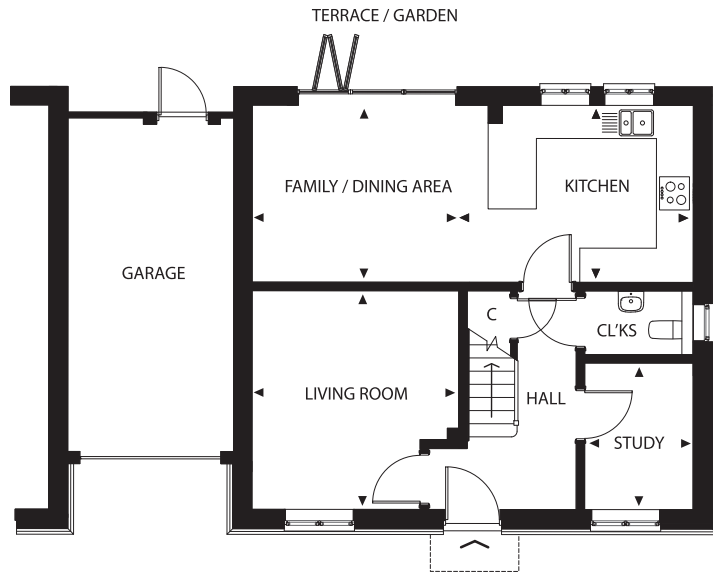
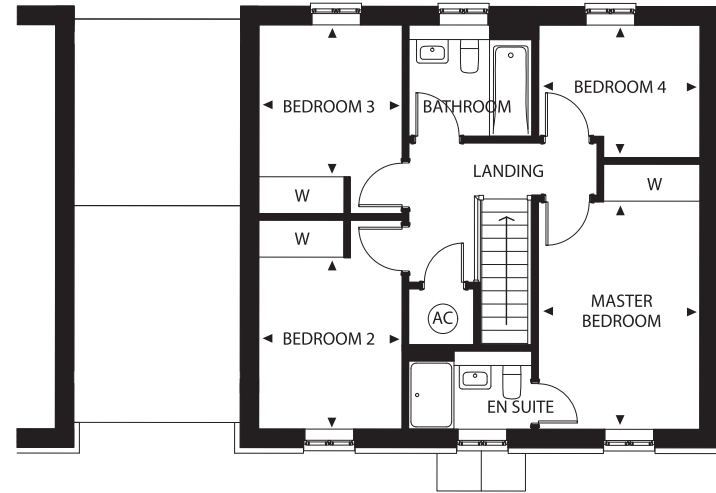


PROPERTY PRESENTATION FOR No. 3 to No. 6.





Ground Floor



First Floor

Plans represent the living space to No.4. & No.11, whilst No.4's garage is separate. Living space to No.3 & No.10 is mirrored, whilst No.10's garage is separate.

No.3, 4, 10 & 11

Four-bedroom link-detached houses with garden, garage and driveway parking.

Kitchen	4.2m x 3.2m
Family / Dining Area	3.6m x 3.2m
Living Room	3.9m x 3.7m
Study	2.6m x 2.0m
Master Bedroom	4.0m x 2.9m
Bedroom 2	3.0m x 2.6m
Bedroom 3	2.7m x 2.6m
Bedroom 4	2.9m x 2.4m

Plans are not to scale. Dimensions are approximate and follow the arrows within the plans.

*Garage side door access to the garden.

