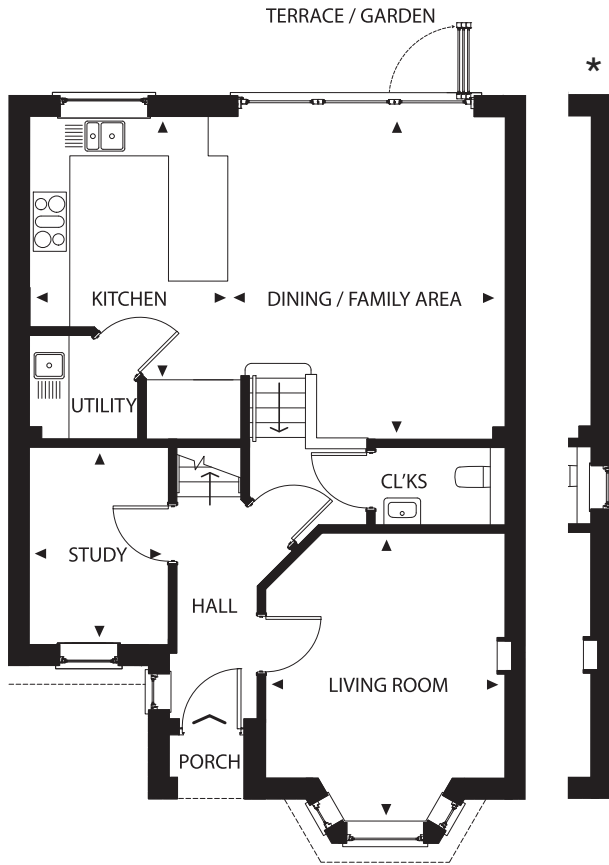


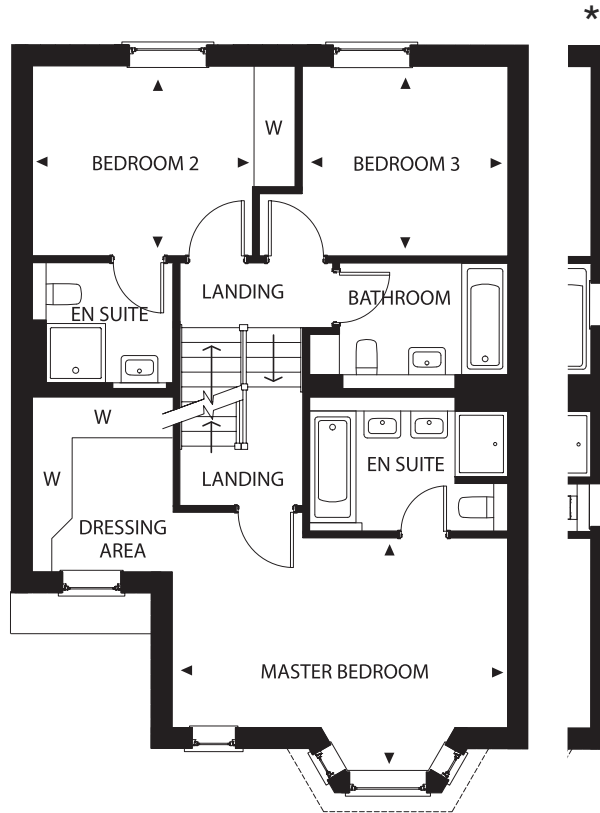
PRESENTING
No.1 to No.3
VICTORIA STREET



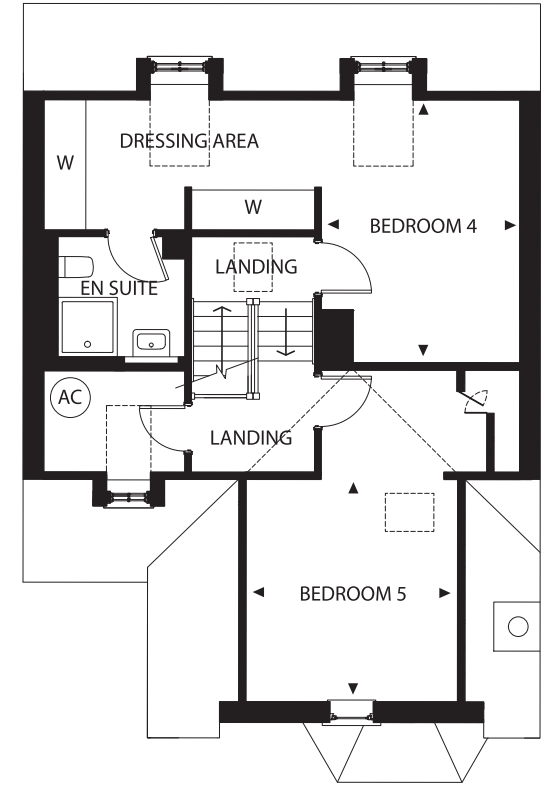
Computer generated artist's impression presenting a street scene of Number One to Number Three along Victoria Street.



Ground Floor



First Floor

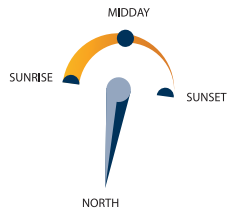


Second Floor

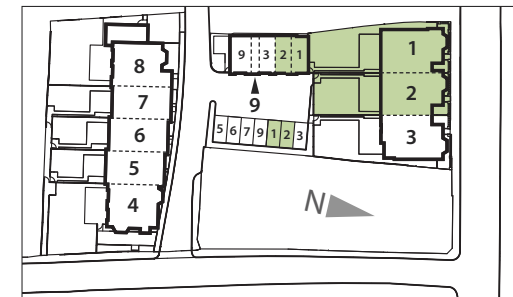
* Number One variations to the west elevation.

Number One & Two

Five-bedroom houses, each with private garden, separate garage and allocated off-street parking.



Kitchen	3.90m x 3.00m
Dining / Family Area	4.90m x 4.10m
Study	3.00m x 2.10m
Living Room	4.30m x 3.60m
Master Bedroom	5.10m x 3.40m
Bedroom 2	3.40m x 2.80m
Bedroom 3	3.10m x 2.80m
Bedroom 4	4.00m x 3.00m
Bedroom 5	3.30m x 3.10m



Drawings are not to scale. Dimensions are approximate and follow the arrows within the plans.