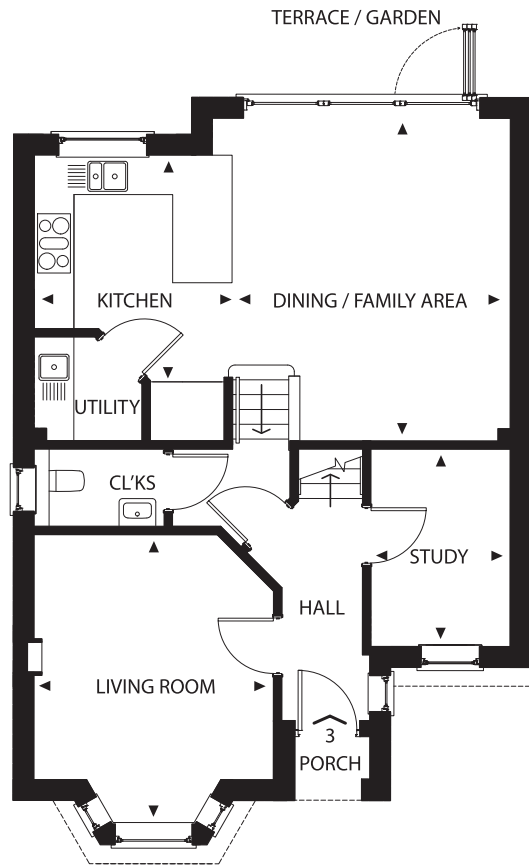


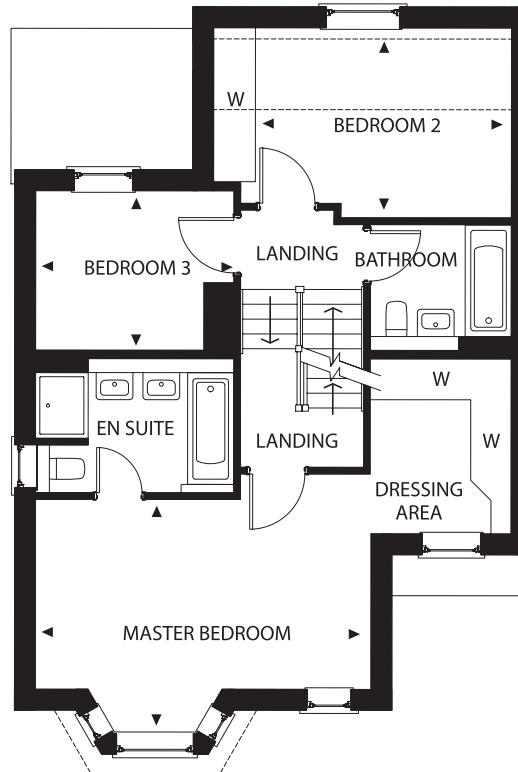
PRESENTING  
**No.1 to No.3**  
VICTORIA STREET



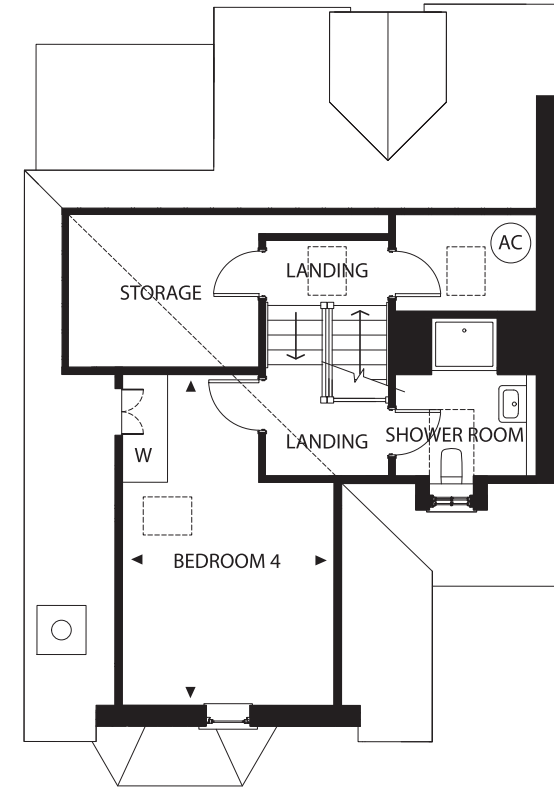
Computer generated artist's impression presenting a street scene of Number One to Number Three along Victoria Street.



Ground Floor



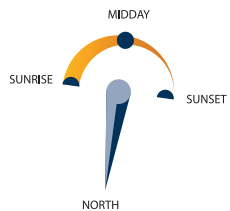
First Floor



Second Floor

# Number Three

Four-bedroom house with private garden, separate garage and allocated off-street parking.



Kitchen	3.20m x 2.90m
Dining / Family Area	4.90m x 4.20m
Study	3.00m x 2.10m
Living Room	4.30m x 3.70m
Master Bedroom	5.10m x 3.50m
Bedroom 2	3.90m x 2.90m
Bedroom 3	2.90m x 2.40m
Bedroom 4	5.00m x 3.10m

