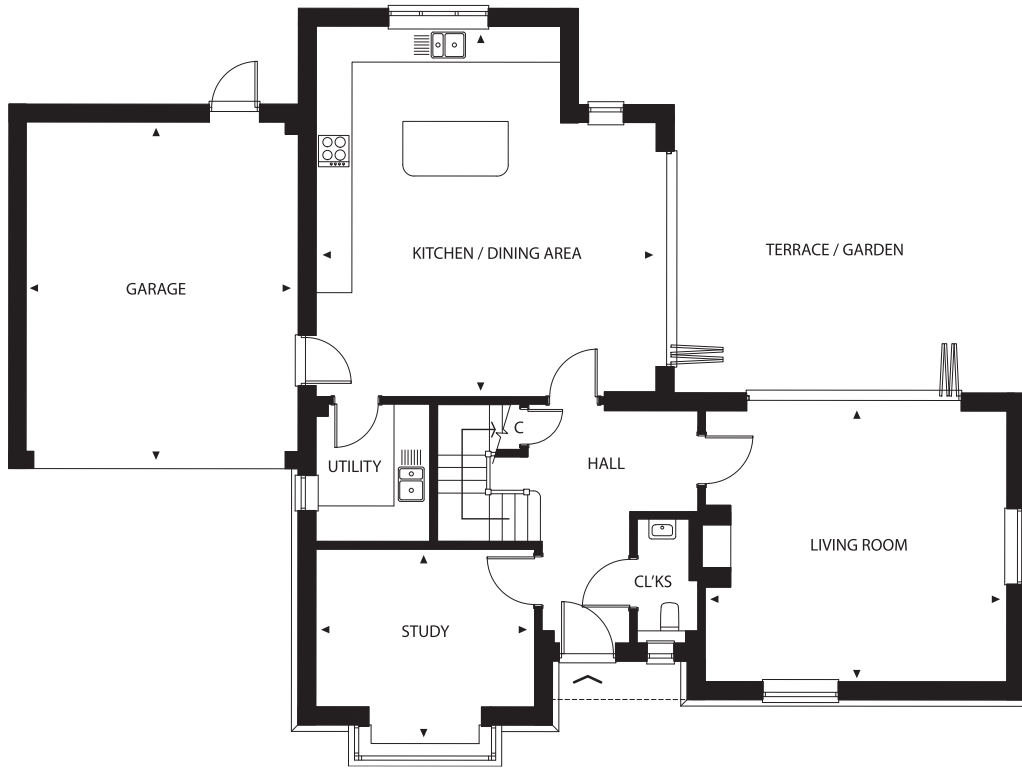


PROPERTY PRESENTATION FOR

No.11&23

No.23 illustrated - No.11 is identical.





Ground Floor



First Floor

No.11&23

Four-bedroom detached house with garden, integral garage and driveway parking.

Kitchen/Dining Area	6.5m x 6.0m
Living Room	5.3m x 4.7m
Study	3.9m x 3.4m
Garage	5.8m x 4.8m
Master Bedroom	4.7m x 4.6m
Bedroom 2	5.2m x 4.8m
Bedroom 3	4.7m x 4.7m
Bedroom 4	3.2m x 3.2m

Plans are not to scale. Dimensions are approximate and follow the arrows within the plans.

