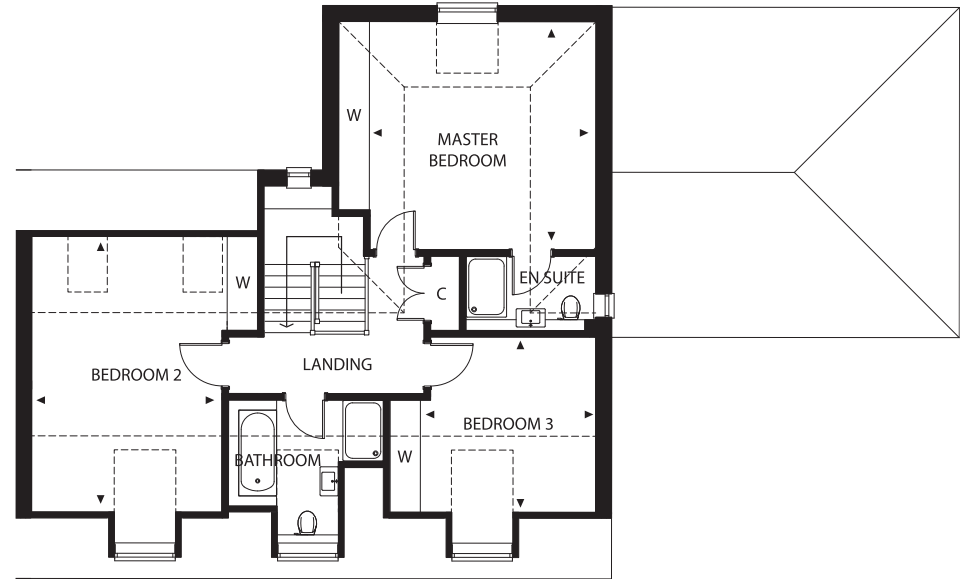


Ground Floor



First Floor

## Number Nine

Three-bedroom house with garden, attached car barn and driveway parking.  
Approx. net area 185 Sqm

Kitchen	4.5m x 4.4m
Dining/Family Area	5.1m x 3.0m
Living Room	7.5m x 4.5m
Study	3.5m x 3.0m
Master Bedroom	5.1m x 4.5m
Bedroom 2	5.5m x 3.8m
Bedroom 3	3.5m x 3.5m

