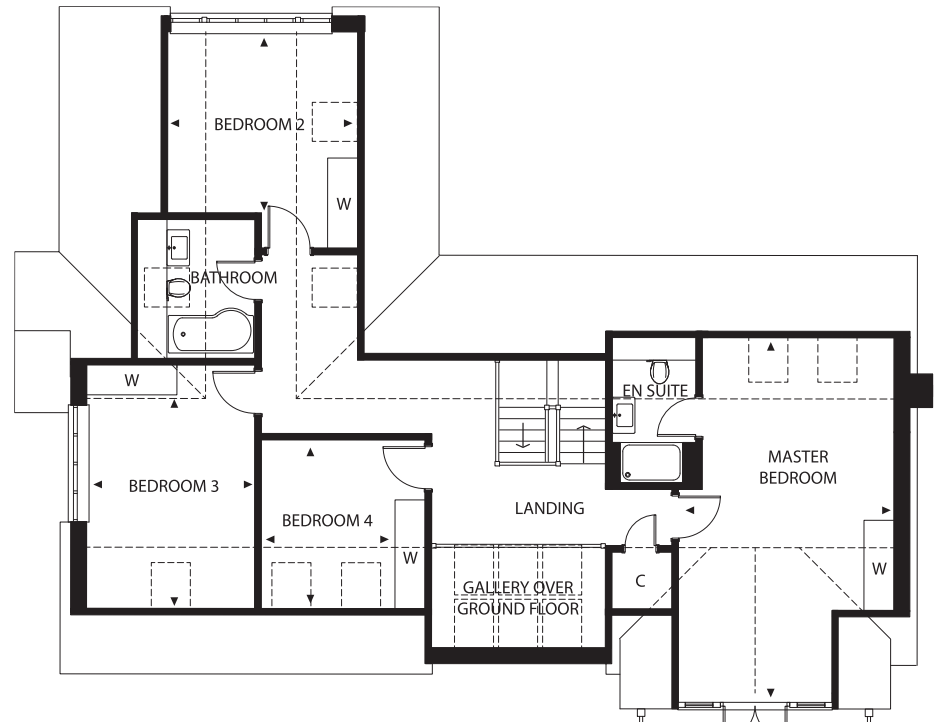


Ground Floor

■ FRONT TERRACE ■



First Floor

## Numbers Three & Four

Four-bedroom house with garden, integral garage and driveway parking.  
Approx. net area 225 Sqm

Kitchen	5.6m x 4.2m
Dining/Family Area	5.6m x 4.4m
Living Room	6.6m x 6.0m
Master Bedroom	7.1m x 4.3m
Bedroom 2	3.8m x 3.6m
Bedroom 3	4.3m x 3.3m
Bedroom 4	3.3m x 2.6m

