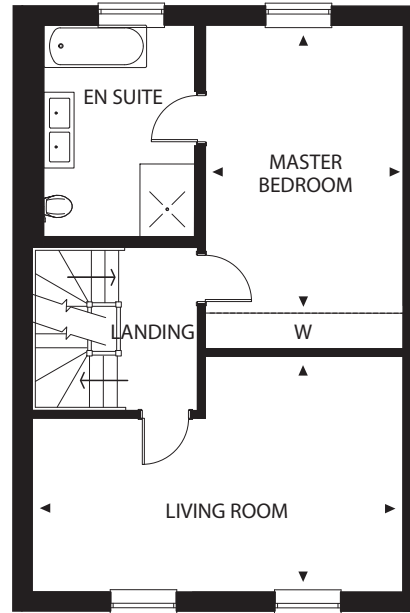
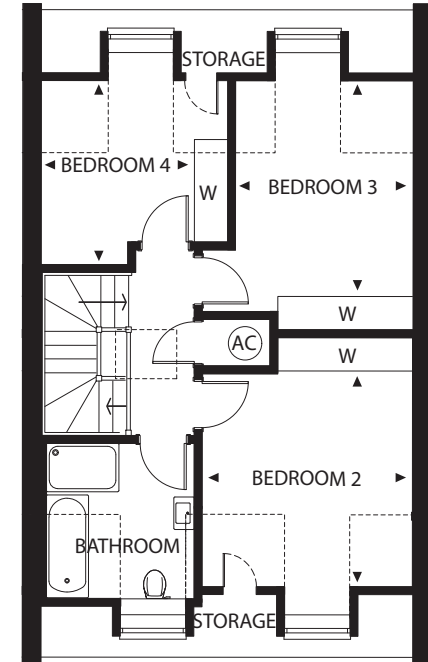


Ground Floor



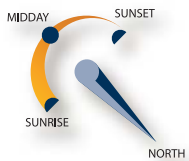
First Floor



Second Floor

# Number Eight

Four-bedroom house built over three levels with private parking and terrace.  
Approx. net area 170.6 Sqm



Kitchen/Family Area	6.1m x 4.5m
Dining Room	3.2m x 3.0m
Living Room	6.1m x 3.9m
Master Bedroom	4.7m x 3.2m
Bedroom 2	3.3m x 3.2m
Bedroom 3	3.3m x 2.7m
Bedroom 4	2.8m x 2.3m



Drawings are not to scale. Dimensions are approximate and follow the arrows within the plans.