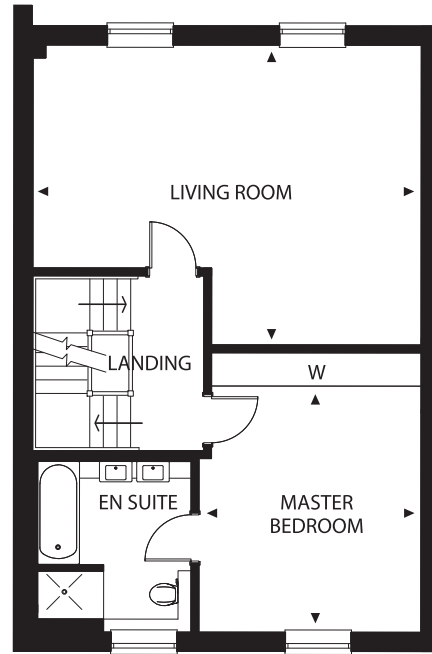
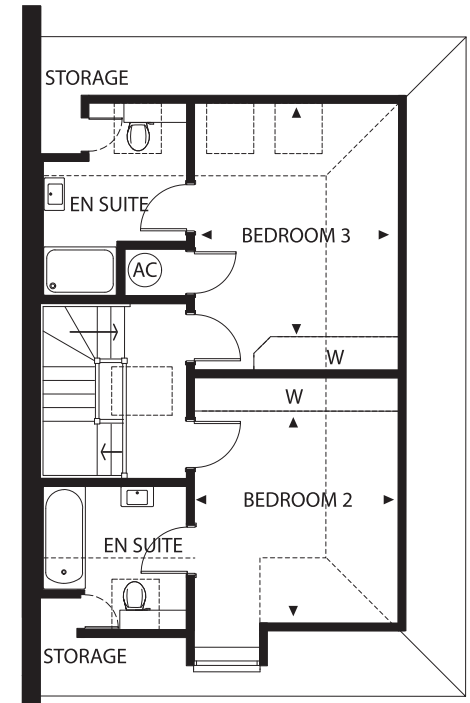


Ground Floor



First Floor

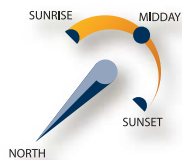


Second Floor

Number Four

Three-bedroom house built over three levels with private parking and terrace.
Approx. net area 176.2 Sqm

Kitchen/Family Area	6.5m x 4.8m
Dining Room	3.5m x 3.0m
Living Room	6.4m x 5.0m
Master Bedroom	4.0m x 3.7m
Bedroom 2	3.6m x 3.4m
Bedroom 3	3.8m x 3.4m



Drawings are not to scale. Dimensions are approximate and follow the arrows within the plans.