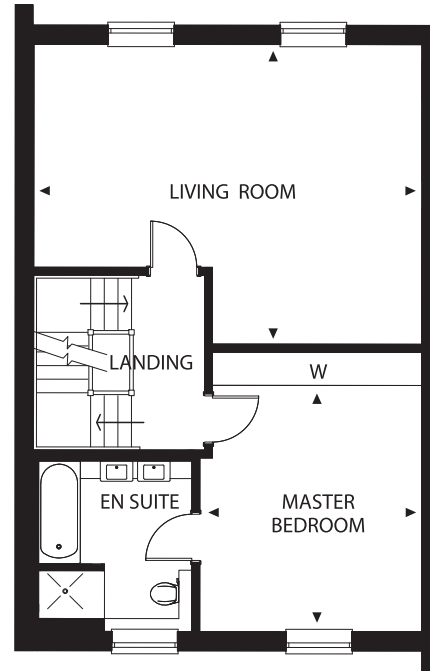
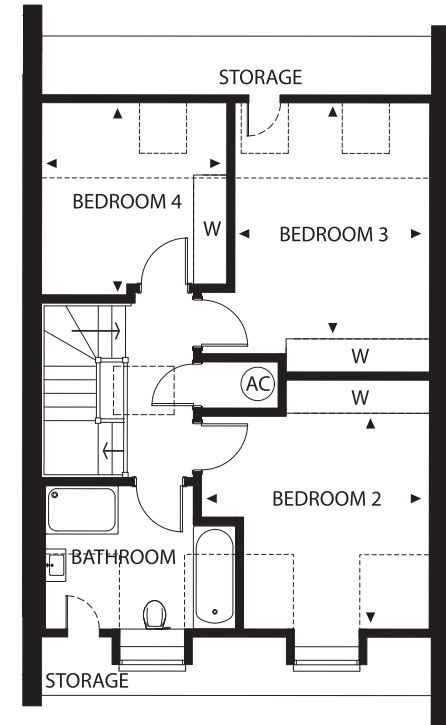


Ground Floor



First Floor

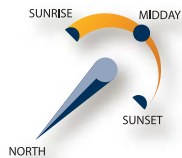


Second Floor

## Number Three

Four-bedroom house built over three levels with private parking and terrace.  
Approx. net area 182.1 Sqm

Kitchen/Family Area	6.5m x 4.8m
Dining Room	3.5m x 3.0m
Living Room	6.4m x 5.0m
Master Bedroom	4.0m x 3.7m
Bedroom 2	3.7m x 3.6m
Bedroom 3	3.9m x 3.2m
Bedroom 4	3.1m x 3.0m



Drawings are not to scale. Dimensions are approximate and follow the arrows within the plans.