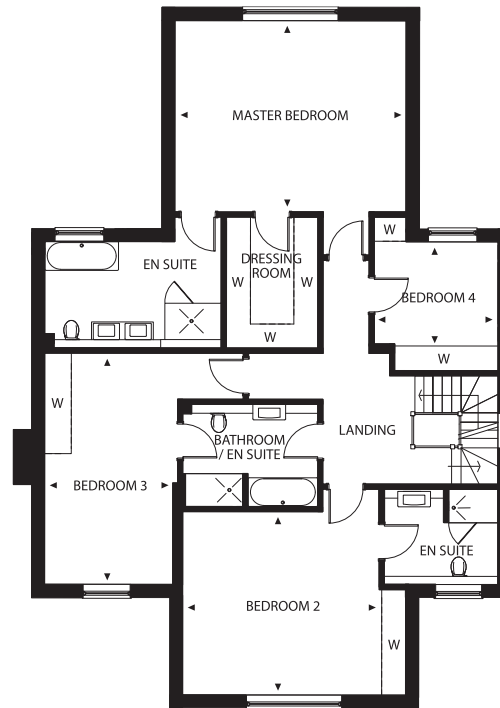
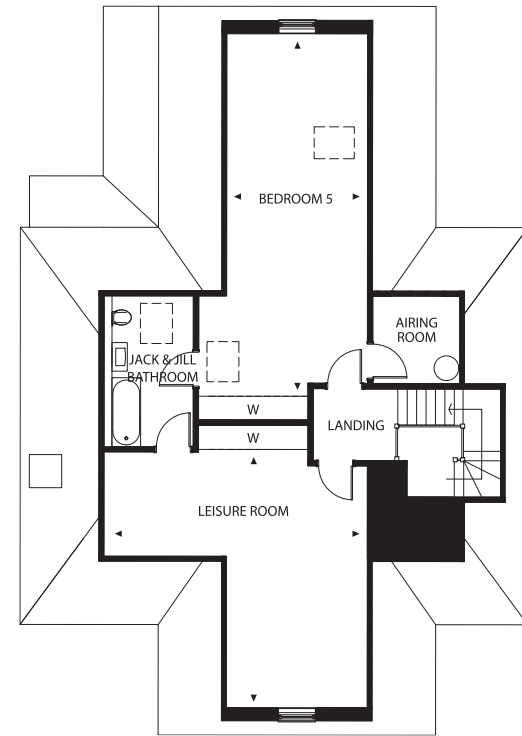


Ground Floor



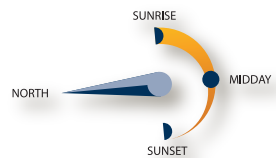
First Floor



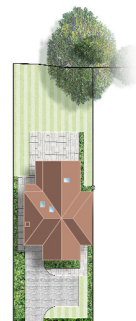
Second Floor

# 31 NETHERLEY

Five-bedroom house with leisure room, built over three levels with integral garage  
 Approx. net area 368 Sqm Plot area 0.14 Acre



Kitchen/Family/Dining Area	6.97m x 6.80m	Bedroom 3	5.65m x 3.18m
Drawing Room	6.00m x 5.47m	Bedroom 4	3.05m x 2.55m
Study	3.17m x 3.15m	Bedroom 5	8.91m x 3.47m
Master Bedroom	5.67m x 4.70m	Leisure Room	6.50m x 5.92m
Bedroom 2	4.87m x 4.50m		



Drawings are not to scale. Dimensions are approximate and follow the arrows within the plans.



31  
NETHERLEY

Computer generated artist's impression, indicative only.